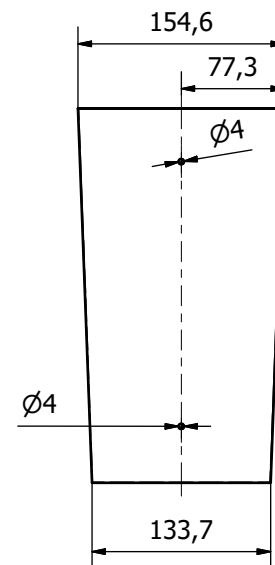
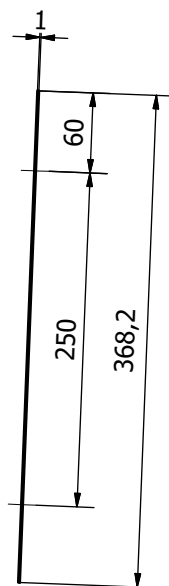
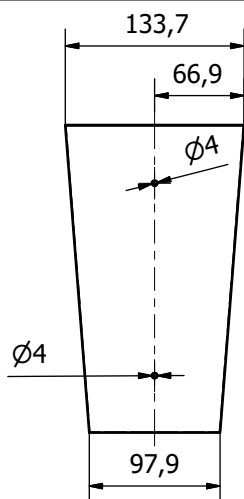
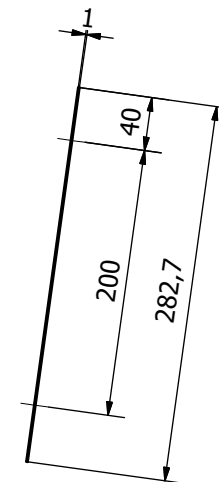


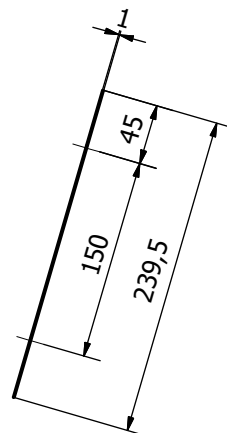
COMPONENTE N°5 - Riflettore 5  
COSTRUIRE N°12 PEZZI  
MATERIALE ALLUMINIO ELETTRILUCIDATO  
ALMECO Vega Energy TS



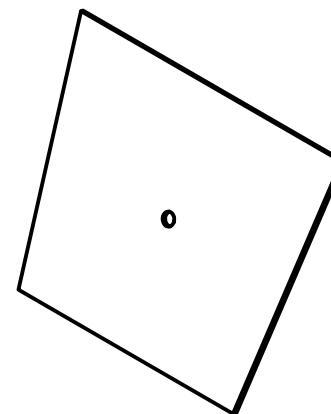
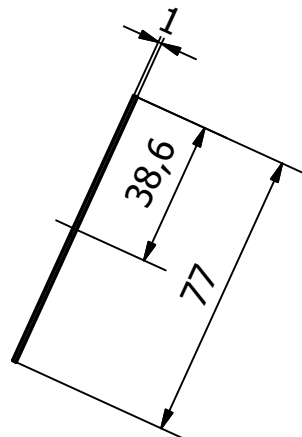
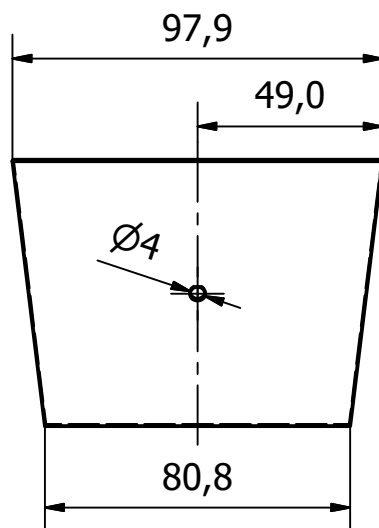
COMPONENTE N°4 - Riflettore 4  
COSTRUIRE N°12 PEZZI  
MATERIALE ALLUMINIO ELETTRILUCIDATO  
ALMECO Vega Energy TS



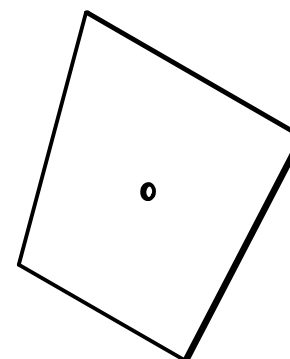
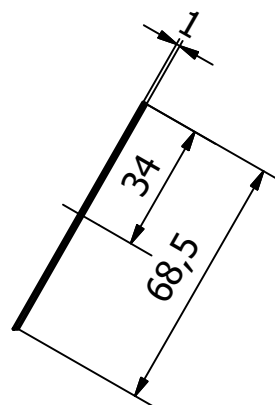
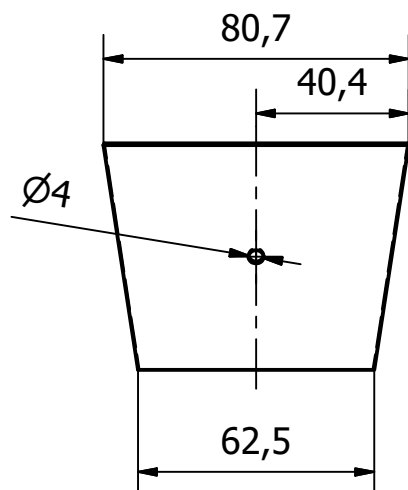
COMPONENTE N°3 - Riflettore 3  
COSTRUIRE N°12 PEZZI  
MATERIALE ALLUMINIO ELETTRILUCIDATO  
ALMECO Vega Energy TS



|               |                |              |         |            |        |
|---------------|----------------|--------------|---------|------------|--------|
| Progettato da | Controllato da | Approvato da | Data    | Data       |        |
| Carmine       |                |              |         | 08/09/2022 |        |
|               |                |              |         |            |        |
|               |                |              | Disegni | Edizione   | Foglio |
|               |                |              |         |            | 1 / 7  |

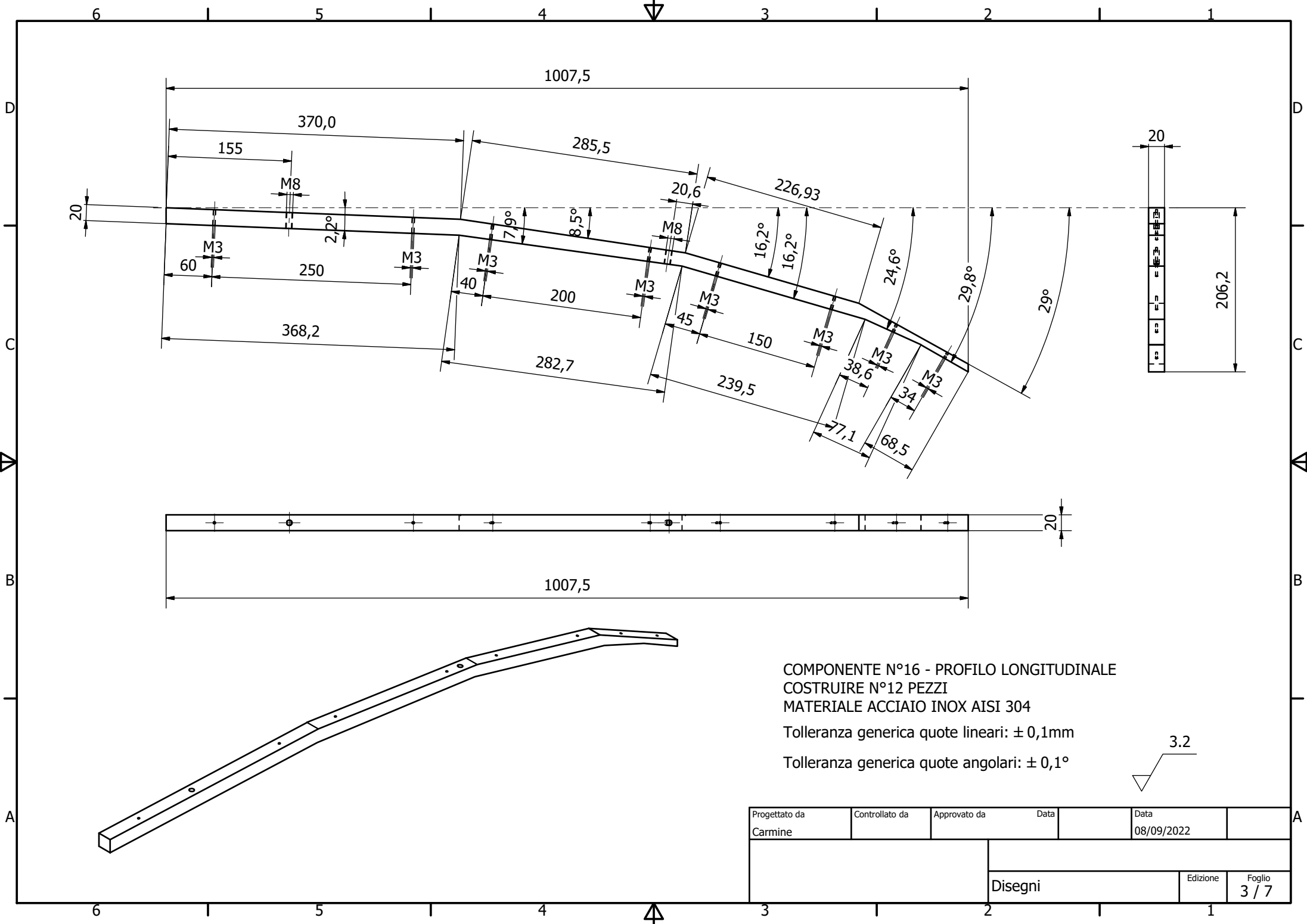


COMPONENTE N°2 - Riflettore 2  
COSTRUIRE N°12 PEZZI  
MATERIALE ALLUMINIO ELETTRILUCIDATO  
ALMECO Vega Energy TS



COMPONENTE N°1 - Riflettore 1  
COSTRUIRE N°12 PEZZI  
MATERIALE ALLUMINIO ELETTRILUCIDATO  
ALMECO Vega Energy TS

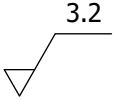
|                          |                |              |         |            |                 |
|--------------------------|----------------|--------------|---------|------------|-----------------|
| Progettato da<br>Carmine | Controllato da | Approvato da | Data    | Data       |                 |
|                          |                |              |         | 08/09/2022 |                 |
|                          |                |              |         |            |                 |
|                          |                |              | Disegni | Edizione   | Foglio<br>2 / 7 |



COMPONENTE N°16 - PROFILO LONGITUDINALE  
COSTRUIRE N°12 PEZZI  
MATERIALE ACCIAIO INOX AISI 304

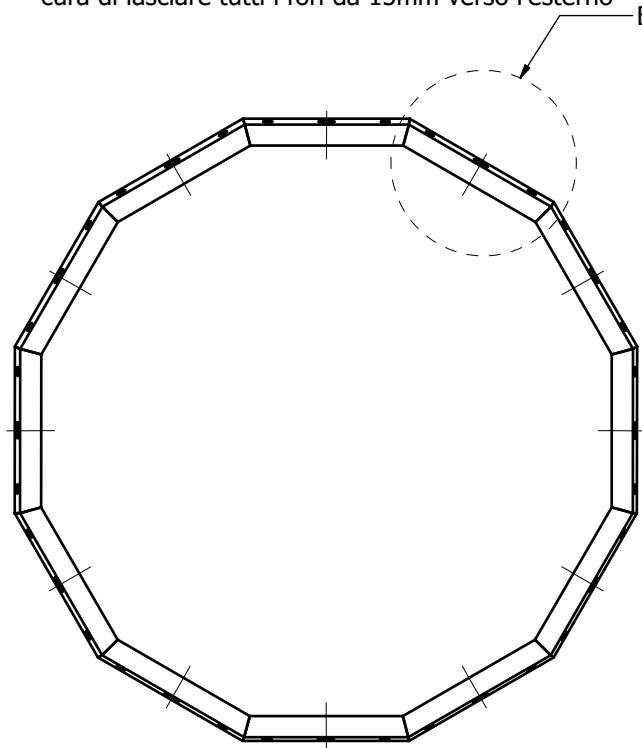
Tolleranza generica quote lineari:  $\pm 0,1\text{mm}$

Tolleranza generica quote angolari:  $\pm 0,1^\circ$

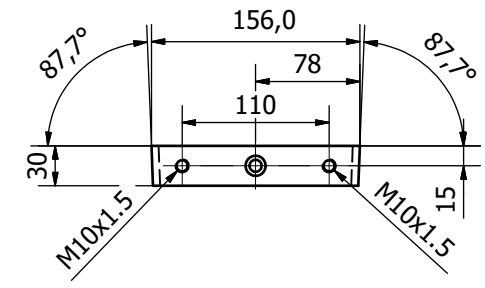
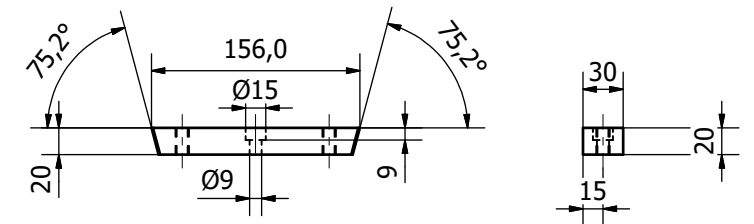
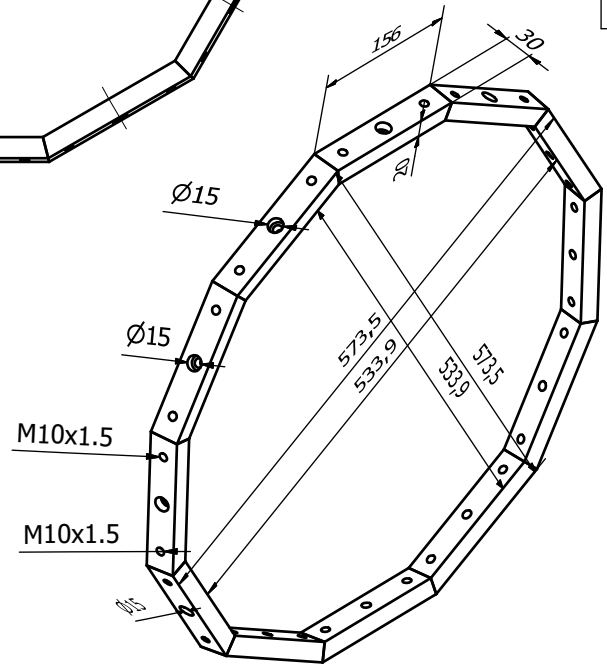


|                          |                |              |                    |                 |
|--------------------------|----------------|--------------|--------------------|-----------------|
| Progettato da<br>Carmine | Controllato da | Approvato da | Data<br>08/09/2022 |                 |
| Disegni                  |                |              | Edizione           | Foglio<br>3 / 7 |

Saldare di testa 12 elementi base  
accostando perfettamente le superfici laterali e avendo  
cura di lasciare tutti i fori da 15mm verso l'esterno



Elemento base

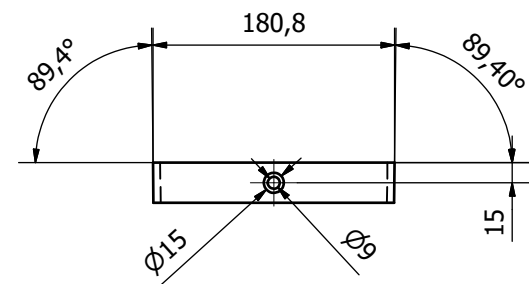
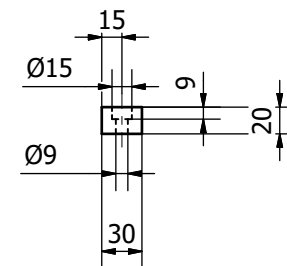
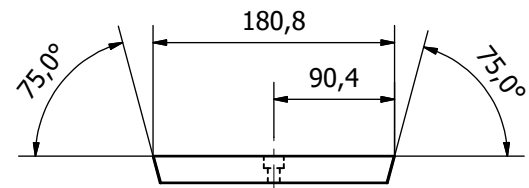
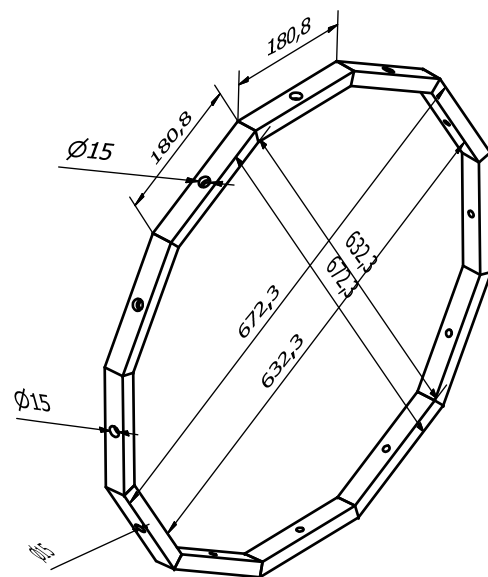
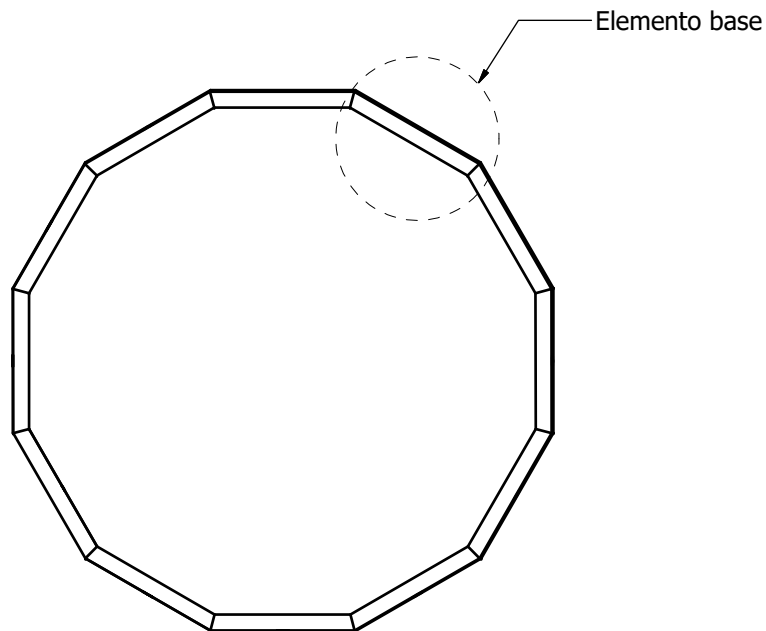


Elemento base  
Materiale Acciaio Inox AISI 304  
Realizzare n°12 pezzi

Particolare n°7  
Cerchio di collegamento inferiore  
Materiale Acciaio Inox AISI 304  
Assieme saldato  
Realizzare n°1 pezzo

|                          |                |              |         |                    |                 |
|--------------------------|----------------|--------------|---------|--------------------|-----------------|
| Progettato da<br>Carmine | Controllato da | Approvato da | Data    | Data<br>08/09/2022 |                 |
|                          |                |              | Disegni | Edizione           | Foglio<br>4 / 7 |

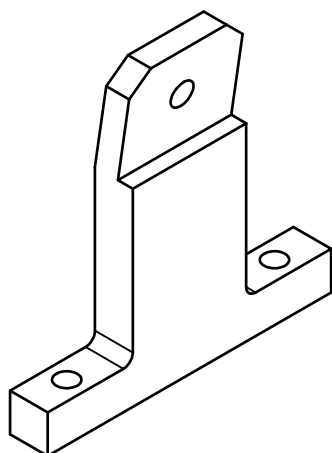
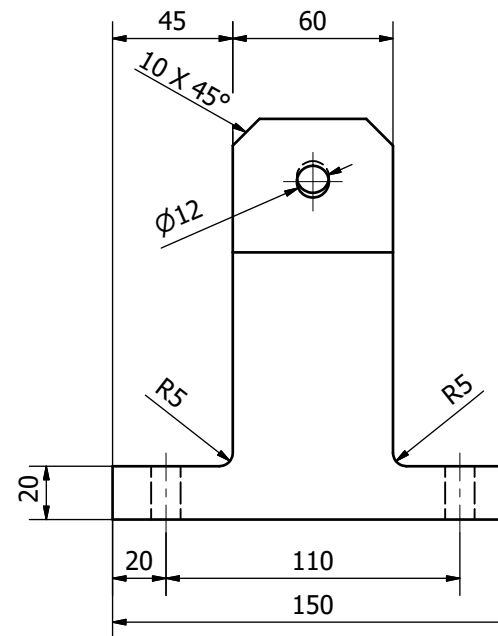
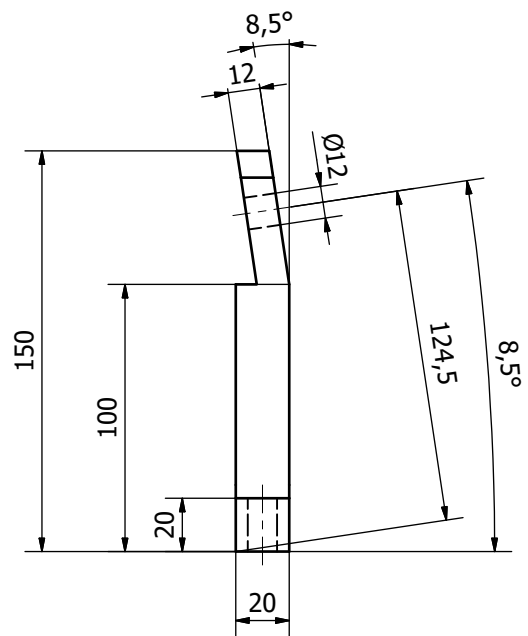
Saldare di testa 12 elementi base  
accostando perfettamente le superfici laterali e avendo  
cura di lasciare tutti i fori da 15mm verso l'esterno



Elemento base  
Materiale Acciaio Inox AISI 304  
Realizzare n°12 pezzi

Particolare n°8  
Cerchio di collegamento inferiore  
Materiale Acciaio Inox AISI 304  
Assieme saldato  
Realizzare n°1 pezzo

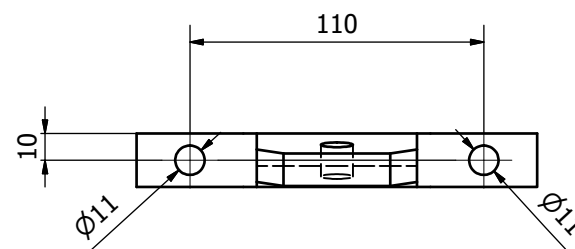
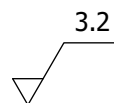
|                          |                |              |                    |                             |
|--------------------------|----------------|--------------|--------------------|-----------------------------|
| Progettato da<br>Carmine | Controllato da | Approvato da | Data<br>08/09/2022 |                             |
|                          |                |              | Disegni            | Edizione<br>Foglio<br>5 / 7 |



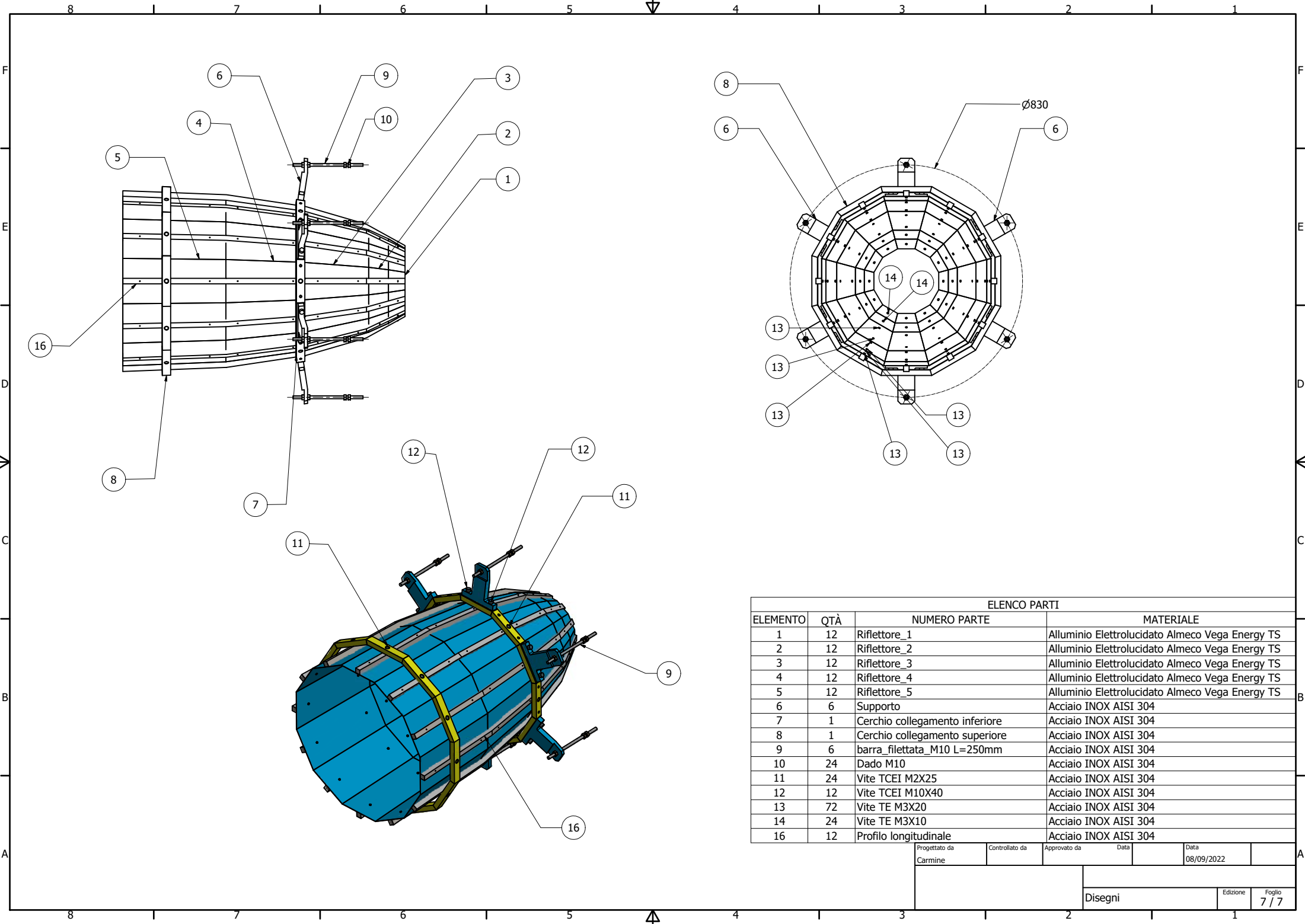
Particolare n°6 - SUPPORTO  
Materiale Acciaio Inox AISI 304  
Assieme lavorato di macchina  
Realizzare n°6 pezzi

Tolleranza generica quote lineari:  $\pm 0,1\text{mm}$

Tolleranza generica quote angolari:  $\pm 0,1^\circ$



|                          |                |              |                    |  |
|--------------------------|----------------|--------------|--------------------|--|
| Progettato da<br>Carmine | Controllato da | Approvato da | Data<br>08/09/2022 |  |
|                          |                | Disegni      |                    |  |
|                          |                | Edizione     | Foglio<br>6 / 7    |  |



| ELENCO PARTI  |     |                                |  |            |              |
|---------------|-----|--------------------------------|--|------------|--------------|
| ELEMENTO      | QTÀ | NUMERO PARTE                   | MATERIALE  |            |              |
| 1             | 12  | Riflettore_1                   | Alluminio Elettrolucidato Almecco Vega Energy TS |            |              |
| 2             | 12  | Riflettore_2                   | Alluminio Elettrolucidato Almecco Vega Energy TS |            |              |
| 3             | 12  | Riflettore_3                   | Alluminio Elettrolucidato Almecco Vega Energy TS |            |              |
| 4             | 12  | Riflettore_4                   | Alluminio Elettrolucidato Almecco Vega Energy TS |            |              |
| 5             | 12  | Riflettore_5                   | Alluminio Elettrolucidato Almecco Vega Energy TS |            |              |
| 6             | 6   | Supporto                       | Acciaio INOX AISI 304                            |            |              |
| 7             | 1   | Cerchio collegamento inferiore | Acciaio INOX AISI 304                            |            |              |
| 8             | 1   | Cerchio collegamento superiore | Acciaio INOX AISI 304                            |            |              |
| 9             | 6   | barra filettata_M10 L=250mm    | Acciaio INOX AISI 304                            |            |              |
| 10            | 24  | Dado M10                       | Acciaio INOX AISI 304                            |            |              |
| 11            | 24  | Vite TCEI M2X25                | Acciaio INOX AISI 304                            |            |              |
| 12            | 12  | Vite TCEI M10X40               | Acciaio INOX AISI 304                            |            |              |
| 13            | 72  | Vite TE M3X20                  | Acciaio INOX AISI 304                            |            |              |
| 14            | 24  | Vite TE M3X10                  | Acciaio INOX AISI 304                            |            |              |
| 16            | 12  | Profilo longitudinale          | Acciaio INOX AISI 304                            |            |              |
| Progettato da |     | Controllato da                 | Approvato da                                     | Data       | Data         |
| Carmine       |     |                                |  | 08/09/2022 |              |
|               |     |                                | Edizione   |            |              |
|               |     |                                | Disegni  |            | Foglio 7 / 7 |